

HIGHER



LOVE

Lifted two metres and moved back from its original position before a slick renovation, this Queenslanders now has a level of sophistication the owners adore

FAMILY ROOM In this new space on the ground floor, the ceiling is exposed concrete. The curved sofa is a design by Cedar + Suede in fabric by Unique Fabrics. "We spent a lot of time on the shape, making sure the seat back was the right height and that it curved in the right places for the space," says the project's interior designer, Carlene Duffy. It's paired with a vintage armchair from Parker & Persia. Coffee table, GlobeWest. Rug, Armadillo.

EXTERIOR (opposite) Heritage restrictions meant the facade of the home couldn't be structurally changed, so it was given a fresh look with new paintwork and a Lysaght Spandek steel roof. A two-car garage was created underneath, next to the entry.

cheat sheet

Who lives here Real-estate agent Haesley Cush and his wife Aleesha, with their daughter Vivienne, 10, and sons Louie, eight, and Teddy, six.

Style of home A 1920s Queenslanders that's been extensively remodelled.

Location Brisbane's New Farm, on land traditionally owned by the Turrbal people.

🕒 Haesley and Aleesha bought the house in 2016 and began renovating in August 2019. The home was move-in ready by March 2021.

KITCHEN Carlene added more of her signature colour to the joinery of the island bench, which is a pink-hued Taubmans Coloursmith tone she created and called Golden Hour. It's topped with Fior di Pesco honed marble from SNB Stone. The upper cupboards (and all of the American-oak joinery throughout) was specified by Shaun Lockyer Architects. Lower cabinets in Resene Quarter Biscotti. Splashback, Thermo Milky tiles from Artedomus. Bar stools, Grazia & Co. Vintage Persian runner, AU Rugs.

DINING AREA (opposite) Clusters of Pop & Scott pendants define the airspace above the kitchen's island bench and this room's dining table. "I wanted something that filled out the area in terms of height," says Carlene. "I came up with the configuration on SketchUp and then oversaw the installation by the electrician to make sure they were in the right spots." Table, GlobeWest. Chairs, Dowel Jones. Banquette by Cedar + Suede in Langham Saddle leather from Warwick Fabrics. Jug, Dinosaur Designs.



 **good news**

Sustainable elements in both the old and new sections include passive solar design with minimal need for active heating and cooling, louvre windows and ceiling fans.



After the arrival of three children, the inner-city Brisbane cottage that was home to Haesley and Aleesha Cush was bursting at the seams. So, they started looking around for a larger house that would better accommodate their growing brood. Having renovated that first home, they had one stipulation: not to do it again. "We were looking for something that was already 'done' because neither of us was interested in renovating again. It just wasn't our jam," says Aleesha.

They started house-hunting but, even with Haesley working in real estate, couldn't find anywhere that ticked all their boxes. "While we saw some lovely houses, there was always something that we'd want to change about them," Aleesha explains. But when they spotted a four-bedroom Queenslander in the desirable riverside suburb of New Farm, they knew they'd found what they were looking for. "It just had a really beautiful feeling, a lovely home with original features that we could move into and not have to do anything to it. As soon as I walked in, I said, 'Let's take this one,'" she laughs.

However, their aversion to renovating wasn't such that they didn't realise the house had the potential to be made even better (and to maximise their investment in a highly sought-after suburb). They just needed to assemble a dream team to help –

and psyche themselves up to tackle another renovation! Having sold a few of his projects in the area, Haesley was more than familiar with the work of Shaun Lockyer Architects, so Shaun and his team were commissioned to reconfigure the house with a new floor plan and building design that included lots of joinery. "Being a typical Queenslander, the living areas were upstairs; we wanted to build out underneath and relocate them downstairs, which would make it easier for the kids to access the backyard," says Aleesha. "But it was also really important for us to keep the character of the original house."

The project involved a 'lift and shift' (running steel beams under the main structure and raising it up with hydraulic jacks) to create more useable space downstairs. "At some point, a rumpus room and an extra bathroom had been put in down there, but it was quite a poky space with a low ceiling," says project architect Michael Ford. Now the lower floor includes a spacious living, kitchen and dining area (plus play/TV room, powder room and laundry), which opens to an outdoor living area, lawn and swimming pool. Upstairs, there are five bedrooms, three bathrooms and a second living area.

The renovated home is flooded with colour, thanks to another of Aleesha and Haesley's secret weapons: interior designer Carlene Duffy from Cedar + Suede. Carlene also happens to be Aleesha's sister, and was given full reign of the interior, which



“The ceilings in this home are VJ timber, plasterboard or pressed metal on the upper floor and plaster on the ground floor plus exposed concrete in the indoor/outdoor living areas as this is the underside of the garden terrace”

MICHAEL FORD, PROJECT ARCHITECT

was painted a stark white. “We didn’t want it to look like everyone else’s house,” says Aleesha. “I love Carlene’s style, and this place now has character, colour and texture. And while it has all the design elements, it’s not stuffy. With three kids, we wanted a house that wasn’t precious, one we could relax in.”

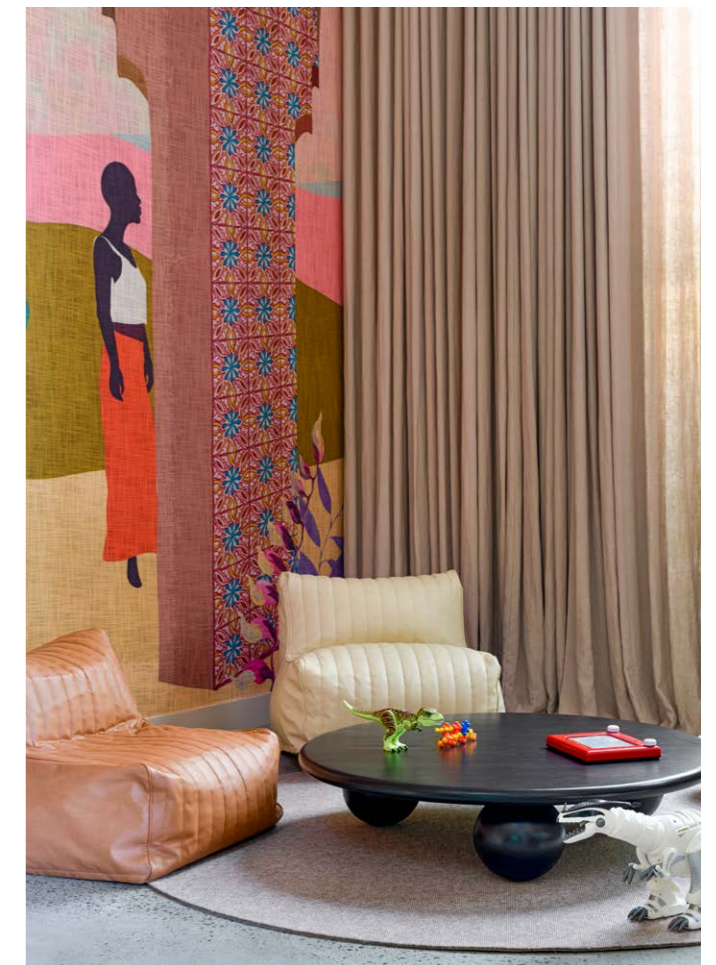
Carlene, who was a contestant on 2014’s *The Block: Glasshouse* along with husband Michael, says the home offers a colour journey that unfolds as you make your way through. “I always take my [colour] cues from the quality of light in a space and other items, such as the timber veneer, which had been specified by the architect,” she says. “The main living area is actually a low light space, so I wanted to use colours like the pinks, ochres and browns to create warmth as well as complement the timber.”

Upstairs, the palette is cooler, with different shades of green and blue to take advantage of more light. In Vivienne’s room, Carlene has used a deeper version of the wall colour on the ceiling to emphasise the original pressed-metal ceiling. “Painting ceilings white can be really jarring, so using the same or similar tone to the walls gives the feeling of being enveloped in colour rather than making the ceiling the focus,” she explains.

Build over and Aleesha is pleased that she and Haesley finally found the appetite to renovate for a second time. “I’m never moving again,” she affirms. “Mainly because I couldn’t imagine having another house that we would love as much.”

As for Carlene, she’s looking forward to spending time in her sister’s house as a guest rather than a designer. “It’s only just been finished really, so it’ll be nice to relax here with Aleesha and Haesley over the summer without thinking of all the bits and pieces I still need to sort out!” **LO**

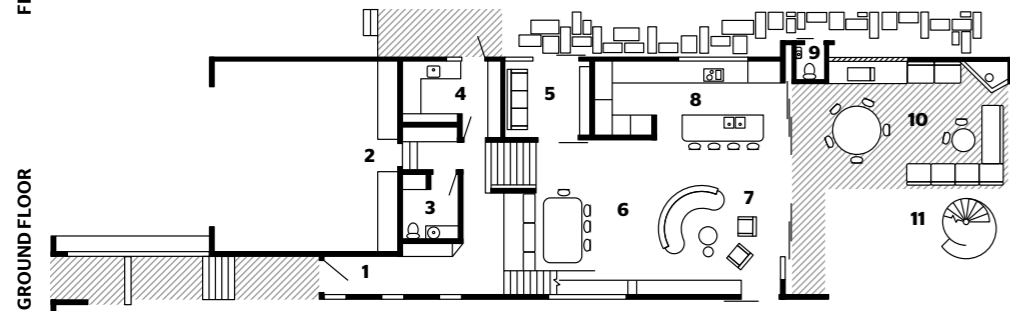
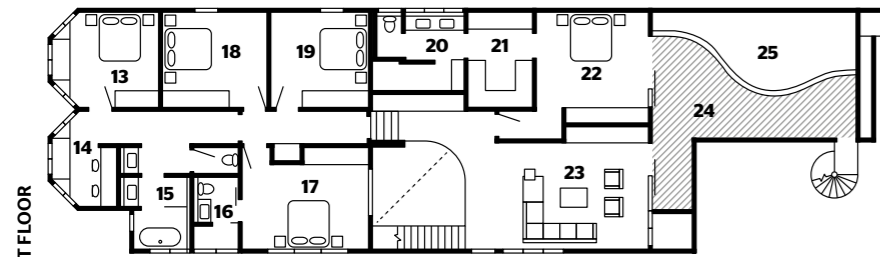
Shaun Lockyer Architects is at lockyerarchitects.com.au and @shaunlockyer. Cedar + Suede is at cedarandsuede.com.au and @cedarandsuede



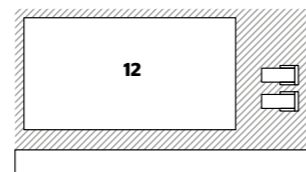
ENTRY (top) Porter’s Paints grasscloth in Maple was chosen for the hall. Wall light, Janie Collins. Rug, Persian Rug Co. Art and tray, owner’s. **PLAYROOM** (above) Carlene added a vibrant mural in the form of a textile wallcovering called *Les Mystères de Madagascar* by Arte. Bruno Ball coffee table, GlobeWest. Kids’ chairs, Henlee. Tretford rug, Gibbon Architectural. Curtains by Cuchi Window Furnishings. **ALFRESCO SPACE** (opposite) The high ceiling continues out here on the patio. Table and chairs, GlobeWest. Bench seat fabric from 3Beaches. Custom rug, Rug Artisan.

“You can’t just choose one colour and use it everywhere. The light changes as you move through a home so you need to take that into account”

CARLENE DUFFY, INTERIOR DESIGNER



- 1 Entry
- 2 Garage
- 3 Powder room
- 4 Laundry
- 5 TV room
- 6 Dining area
- 7 Family room
- 8 Kitchen
- 9 W/C
- 10 Outdoor living
- 11 Lawn
- 12 Pool
- 13 Bedroom
- 14 Study
- 15 Bathroom
- 16 Ensuite
- 17 Bedroom
- 18 Bedroom
- 19 Bedroom
- 20 Main ensuite
- 21 Walk-in wardrobe
- 22 Main bedroom
- 23 Living room
- 24 Roof terrace
- 25 Garden



POWDER ROOM This is a little different in style to the upper-floor wet areas. The VJ boards are bathroom-friendly easyCLAD by Easycraft, painted Resene Toast. Ceiling, Resene Half Moleskin. Floor tiles, Tile Cloud. Vanity, Concrete Nation. Circ wall light, Lights Lights Lights. Mirror, custom-made. Art by Vynka Hallam.

BOYS' BATHROOM (opposite) Blue hues rule in here. The vanity is American oak. Yohen Border wall tiles, Artedomus. Frammenta Bianco floor tiles, National Tiles. Walls painted Resene Casper.

LESSONS LEARNT

“Find your dream team”

ALEESHA CUSH, HOMEOWNER

“I think the reason we enjoyed this renovation so much more than our last one was because we had a great team. Even though we had a good builder the first time, here we had a fantastic architect, a great builder and a very talented designer, who were all on our side in wanting to create the very best house they could.”



MAIN BEDROOM (left) The bedhead by Cedar + Suede was made by Dog Thumbs design. “The Duomo Piccolo lights from Janië Collins were already in place so we needed something quite low,” says Carlene. Feature wall, Taubmans Sage Craft. Quilt cover, Kip & Co. **HALLWAY** (below) Surrounded by original stained-glass windows, the bench seat is Laminex Fresh Spring at the base and striped Lanark fabric in Duck Egg by James Dunlop on the seat.



GREAT FINDS



CLOCKWISE (from far left) Bowie pendant, \$199, Beacon Lighting. Terrazzo-look porcelain tile in Sparkle Coffee, \$29 per sq m, Earp Bros. Bonbon lamp in Blue Tones, \$1780, Hay. Colosseum honed basalt tiles in Black, \$39.95 per 305mm x 305mm, National Tiles. Dulux Wash&Wear paint in Pink Gin, \$91.91 per 4L, Bunnings. Orana chestnut-timber coffee table, \$1499, Domayne. Preston glass vase, \$59.95, Country Road. Rock resin jug, \$255, Dinosaur Designs. Blooms linen quilt cover, \$329, Kip & Co. Tropicana outdoor rug in Green (180cm), \$279, Domayne. Satara ‘Arch’ bar stool, \$956, Life Interiors. Valley sofa, from \$8580, Jordan. Sahara Turkish distressed runner in Pink (300cm x 80cm), \$185, Miss Amara. Livorno round dining table in White Speckle, \$4515, GlobeWest. Etra lumbar cushion in Eucalypt, \$130, L&M Home. Alec cushion in Shell, \$139, L&M Home. Eira woven outdoor dining chair, \$219, Domayne.