



One Wybelenna

Architects: Shaun Lockyer
Architects

Location: Brookfield, Brisbane,
Australia

Photography: © Scott Burrows

This project was born out of the remnants of a Robin Gibson cottage that existed on the site. The design, inspired by the work of both Gibson and architect Richard Neutra, is a contemporary reinterpretation of modernist design. The house enjoys a long, linear plan with the rooms arranged to soak up the winter sun. A natural palette of zinc, tallow wood, slate, and travertine creates a robust and timeless aesthetic.



The structural method, stone masonry, and landscape are key aspects of the design and were considered from the outset, as was the environmental design strategy.



001

The environmental, economic, and aesthetic benefits of green roofs are widely recognized. These benefits include the protection of waterproofing, water retention, and thermal insulation.

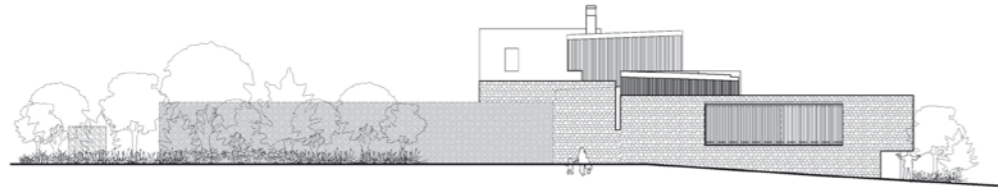


The new guest pavilion sits on the original footprint of the Gibson cottage and reuses the original stone. The planning of the house prioritizes solar orientation and views.

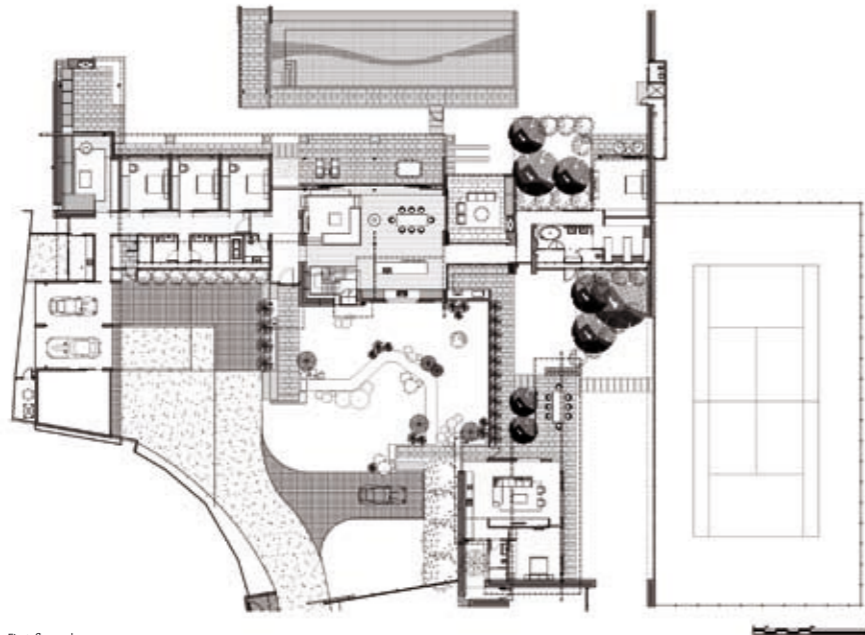




South elevation



East elevation



First-floor plan



The layout is defined by stone blades that bisect the house and delineate living zones and pavilions.



002

Energy-efficient light bulbs use less energy than incandescent bulbs, which are highly inefficient. There are two types of energy-efficient light bulbs: compact fluorescent and light-emitting diodes.



The house has been thermally engineered. In addition to green roofs, it features a number of sustainability initiatives, including 15 KW of solar power, skylights, and low-E glass throughout.



003

The use of reclaimed timber gives a space a sense of history. Most reclaimed timber is obtained from old barns and warehouses and is used in homes for siding and flooring.