

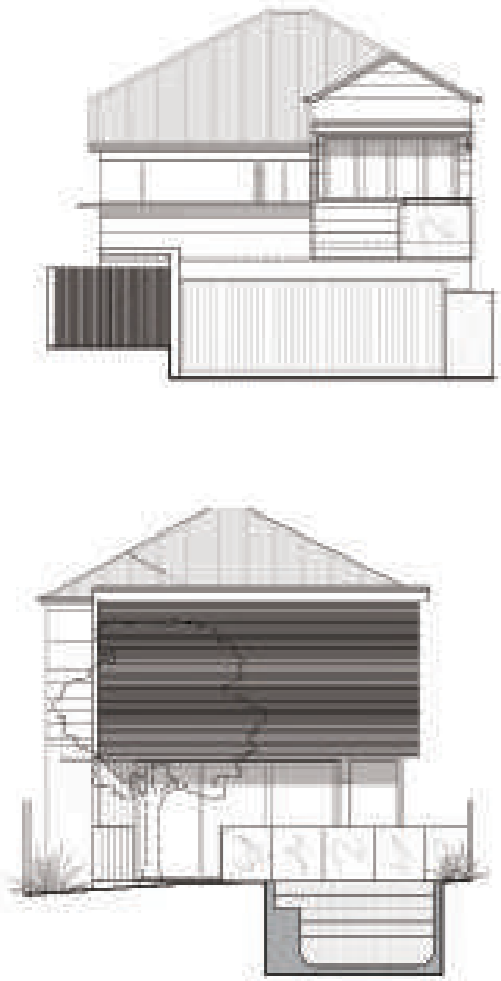
105 V is created by extending and renovating a pre-war home, featuring plenty of space and light.

Shaun Lockyer Architects
Brisbane, Australia
350sqm

The house is a contemporary renovation and extension of an original pre-war cottage in New Farm, Brisbane.
The design incorporates a dramatic screening device designed to offer sun protection, privacy and intimacy of space.

A large central void joins the new and the old parts of the house and allows for North sun to flood the living space.
The house has a deliberately minimal and restrained material palette with a highly articulated timber and steel bridge as a feature within the space.





A large central void joins the new and the old parts of the house and allows for the sunlight from the north to flood the living space.

