

**FEATHERED FRIENDS**

Enjoy birds in the bush  
with grevilleas at hand

**GIVE PEAS A CHANCE**

An easy-peasy tasty tartine  
is the toast of the town

Folk  
**culture**

Creating a new way of living  
for a grown-up family



# Creating a folk story

**Tonya Turner**

After building three houses, Tony and Mary found it difficult moving from their much-loved home of 18 years in Balmoral in 2012, to be closer to their daughters' high school.

Their son, project architect Andrew Forsyth, was living in New Farm and working with Shaun Lockyer Architects.

Before moving to Sydney, he helped his parents find a property to renovate and create a home they could love as much as their old one.

"We had built our three previous homes and enjoyed the freedom that this brings in terms of layout and functionality," Tony says.

"We particularly missed the connection between living areas and kitchen with gardens and outdoor entertaining spaces."

Tony and Mary engaged architect Shaun Lockyer to turn the small two-bedroom home built in 1942 into a spacious contemporary abode.

The project name, Folkhouse, came from Andrew's habit of calling his parents "the folks".

"We have two adult girls still living at home so we were keen to accommodate their needs but to keep the project to a scale suitable for empty nesters when they inevitably move out," Tony says.

Keeping as much of the original home as possible was also paramount. Shaun grafted a new extension (for the parents) to the rear of the old home (for the girls) and extended this in complementary materials including weatherboards and brick.



Cooking and entertaining are a priority for the couple, especially as Mary runs a catering business.

At the rear of the house, an operable roof structure defines the outdoor living area, with fireplace.

"The kitchen and food preparation areas were major priorities for us along with easy access to the outdoor entertainment areas and garden," Tony says.

Keeping as much of the original home as possible was also paramount.

Shaun grafted a new extension (for the parents) to the rear of the old home (for the girls) and extended this in complementary materials including weatherboards and brick.



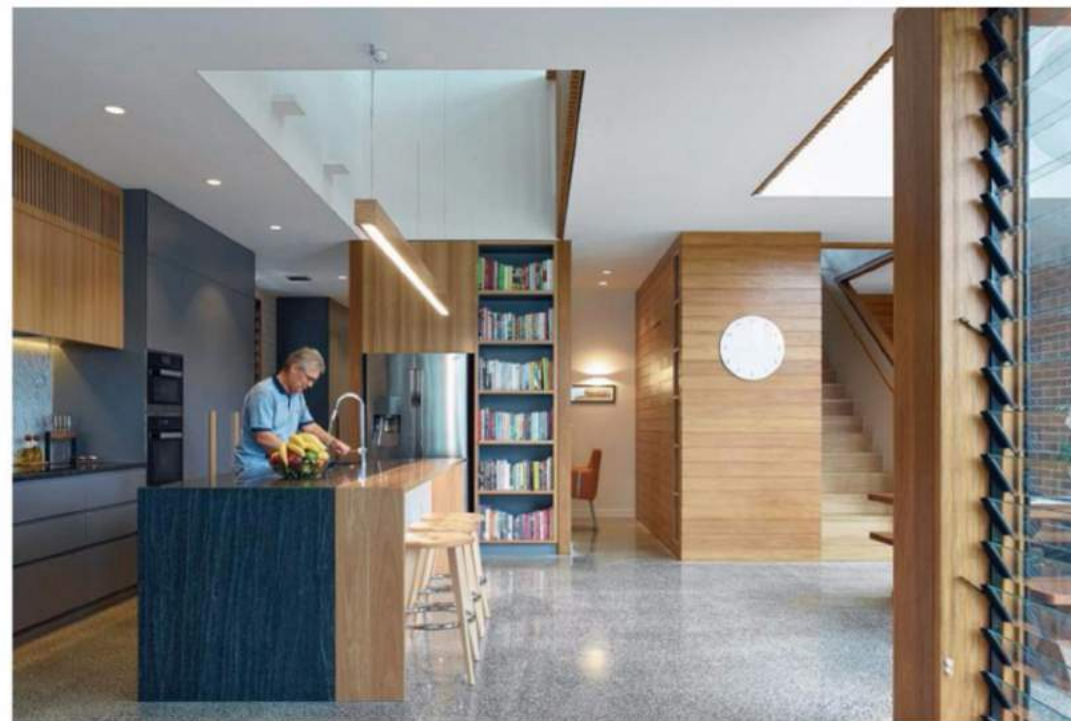
'An architectural moment of generosity which is rooted in the gift of sharing a meal ...'



"We wanted the narrative of the existing home to flow through into the new extension," Shaun says.

"Trying to find a way to engage the old and the new with integrity is always challenging but we felt we did the original home justice."

To maintain the spirit of the existing cottage, Andrew says only minimal alterations were made to the



**MADE TO SHARE** ... The couple love to cook and entertain in the house designed for them and their adult daughters, with easy access from the kitchen to outdoors.

building footprint and construction details.

"Existing ceiling castings, traditional stained glass doors and windows and the building facade elements were all reconditioned rather than replaced, which ultimately increased the cost of the project but pays homage to the craftsmanship of the original building," Andrew says.

A dramatic void and bridge in the living spaces articulate the junction between the new and the old.

"The atrium space created is the meeting of the old and new, the public

and the private. What has been achieved is a dynamic, optimistic space which speaks of the passion of its occupants, an architectural moment of generosity which is rooted in the gift of sharing a meal and a place where friends and family come to meet at the heart of the home," Andrew says.

**Architect: Shaun Lockyer Architects,**  
ph: 3257 7288

**Bullder: James Bragg, JBS Bullders,**  
ph: 0419 391 270

**Pictures: Scott Burrows, Aperture Photography**



**HEARTH AND HOME** ... A fireplace makes the outdoor living area useable year-round.