

EXTERIOR Fiona, David and four-year-old Poppy outside their eye-catching reinvented Queensland. Cladding in Dulux Lush.
STUDY NOOK Blackbutt veneer cabinetry features throughout the house. Echo Panel Puzzle pinboard in Charcoal, Woven Image. For Where to Buy, see page 165.

Vision SPLENDID

The transformation of a rundown Queensland into a contemporary family home involved an inspiring combination of old and new.

STORY CHRIS PEARSON • STYLING KATE NIXON • PHOTOGRAPHY MAREE HOMER

This is the life

The renovation turned the original weatherboard's floor plan on its head — moving the bedrooms upstairs and the living spaces to the ground floor, connected to the garden. As a result, the family spends most of their time downstairs in the kitchen and living areas. "It's my favourite spot when it's all opened up," says Fiona.



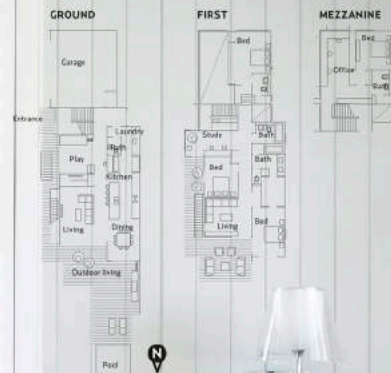
Opposites attract in this home in Brisbane's inner suburbs – old and new, masculine and feminine, slick and romantic... what its architect Shaun Lockyer calls the "yin and the yang".

When owners Fiona and David Waller first bought a beaten weatherboard on this site in 2009, however, such a blissful union seemed unlikely. The Queensland's glory days were a distant memory – the deck was rotting, the paint was peeling, it had ramshackle rear additions and some asbestos cladding.

But Fiona, an interior designer at Inhabit Studio, saw beyond the facade. It was close to the city and occupied a site with panoramic views, poorly utilised. It hugged the boundary on three sides so if they kept the shell and footprint, renovations would overcome setback regulations. And it faced north. Other positives included character and a yard for children Poppy, now four, and William, two. After >

acurse
halllight
onthelimb
ofmen

KITCHEN/LIVING Moving the main living spaces downstairs allows for more relaxed family time, with good sightlines between kitchen and play areas. Pendant light, Lumen& Architectural Lighting. Bar stools, Empire Office Furniture. Abey Cecal Oxygen H-Tech sink mixer from Harvey Norman Commercial. Calacatta marble from SNB Stone. Text artwork (in hall) by Vernon Ah Kee. Jasper sofa in Viva Creme leather and patterned cushions, all King Furniture. Baskets, Milton Fruit Bowl. Artwork over sideboard by Jon Cattapan. Blackbutt flooring, Boral. Designer buy: Old Yarn Kilim rug in Antique ZigZag, from \$3500, Loom Rugs. Far Where to Buy, see page 168.



Dulux Lexicon
(quarter strength,
living areas)

Dulux Dieskau
(William's room)

Dulux Luck
(exterior cladding)

ADD A DASH OF

Birelat Burnt Clay

Introduce an unexpected dash of colour with a dash of yellow.

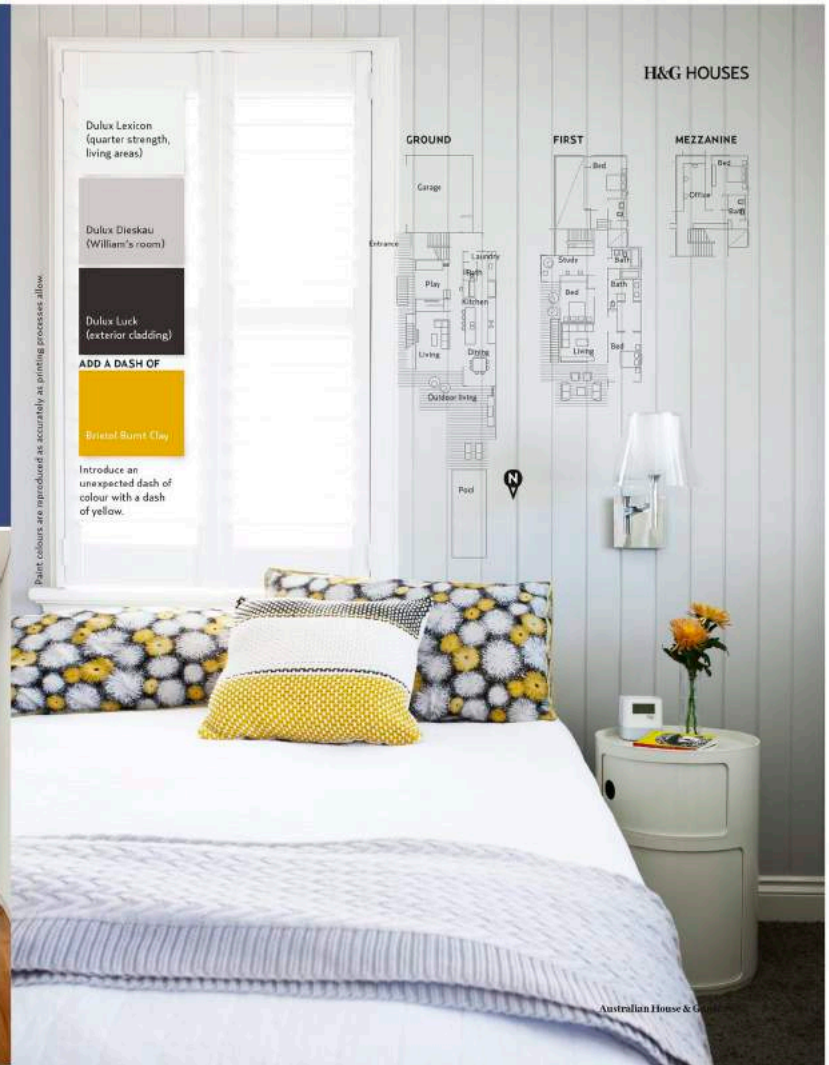
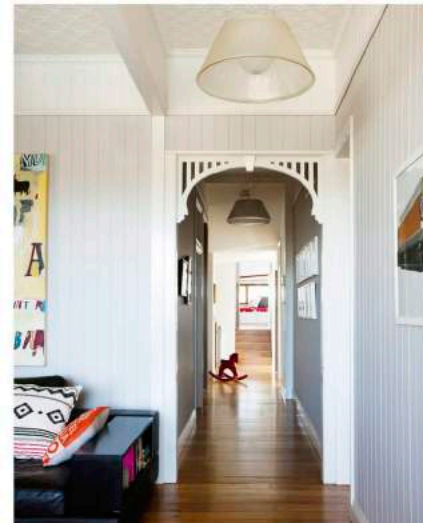
Paint colours are reproduced as accurately as printing processes allow.

< UPSTAIRS LIVING The original parts of the house feature pressed-metal ceilings. Jasper sofa in Viva Mocha leather, King Furniture. Artworks by Adam Lester (above sofa) and Ward Squires (white frame). VJ laminated sheeting on walls from LGH Constructions. Designer buy: Flos Romeo Moon pendant, from \$704, Eurline.

PLAYROOM Fiona can keep an eye on the children in here from the kitchen. Vitra Eames Elephant stool from Space. Artwork above sofa by Gordon Bennett.

WILLIAM'S BEDROOM This space is designed to grow with him. Leander cot/bed from Bubs Baby Shops.

MAIN BEDROOM Yellow adds a bright note to the serene scheme. Kartell Componibili cabinet, Spaco. Tino Korte wall light, Eurline. Dillowaxes and throw, Sheridan. **For Where to Buy, see page 188.** >





◀ inviting four Brisbane architects to pitch for the job, the couple settled on Shaun Lockyer – not just for his plans, but for what Fiona calls his collaborative temperament. “I am an interior designer. I knew he would welcome my input.”

The brief? “It had two bedrooms – we needed four – a playroom space beside the kitchen so I could keep an eye on the children, multiple living areas and a real sense of indoor-outdoor connection,” says Fiona. That spectacular city view was also in the couple’s sights.

Shaun retained most of the top floor but gutted the lower level, excavated into the rock underneath and installed a new concrete slab to allow three-metre-high ceilings on the ground floor. An original garage, which was to the side of the property, was joined to the existing house and two new levels, including a mezzanine, were added directly above it.

While the living areas and bedrooms in the original house were on the top floor, the new ground floor now encompasses living room, kitchen, dining, guest bathroom and laundry. The first floor accommodates three bedrooms, a music room, study and deck. Meanwhile, a mezzanine sandwiched between the two has a guest bedroom and an office for the couple who often work from home and enjoy the flexibility it offers.

“We teased every single millimetre out of the floor plan within the existing footprint,” says Shaun.

While downstairs is contemporary, the original parts upstairs feature pressed-metal ceilings, double-hung sash windows, timber floors and tongue-and-groove walls. “We wanted to retain the character,” says Shaun. “The new sections are clearly defined, although a connection is created between the two.” **H&G**

Architect: Shaun Lockyer Architects, Fortitude Valley, Queensland; (07) 3257 7288 or www.lockyerarchitects.com.au. Interior design: Inhabit Studio; 0413 744 277.

Storage, sorted!

“There’s a truckload of storage throughout the house,” says Shaun. “Every room has joinery.” The bedrooms have built-ins, there are also three linen cupboards upstairs and another beside the kitchen. On the ground floor, a concealed cupboard extends under the stairs and there’s more storage in the built-in credenza in the living room. “The storage and the cabinetry is a big deal,” he says. “It’s a beautifully built and crafted house, with a bespoke feel.”

EXTERIOR The home now connects directly to the rear lawn and pool. Mirthe Tribu sunlounger and outdoor table, Cosh Living. Chairs, Empire Office Furniture.

POPPY’S ROOM This special reading spot has deep drawers underneath. Marimekko Unikko fabric, Chee Soon & Fitzgerald. Cloth Family Tree rug. Designer Rugs.

BATHROOM Travertine timber and porcelain mix in the bathroom, with louvres aiding cross ventilation. Luna bath spout, Rogerseller. For Where to Buy, see page 188.



‘THE NEW SECTIONS ARE CLEARLY DEFINED, ALTHOUGH A ‘CONNECTION’ IS CREATED BETWEEN THE TWO.’

SHAUN LOCKYER, ARCHITECT